



Cyan RGBCW LED Driver

P/N: CYAN-A24V-xxx-LG

RGB, RGBW & RGB + Tunable White 24VDC Class 2 LED Driver



RGBCW



Tunable White



Dimmable
0%-100%

The Cyan RGBCW 24VDC LED Driver offers unparalleled wireless color control capabilities. It combines RGB, RGBW, and RGB + Tunable White in a single integrated LED driver. Enclosed in a UL-listed metal case specifically designed for the North American market, it provides lighting OEMs with a plug-and-play, easy-to-install solution for color and dimming control. With smooth and flicker-free color transitions, the Cyan RGBCW Driver meets the highest industry standards. The Cyan LED Driver provides convenient control options, enabling direct control through our Smart Air app without the need for extra components.

smartAir

24VDC

Class2



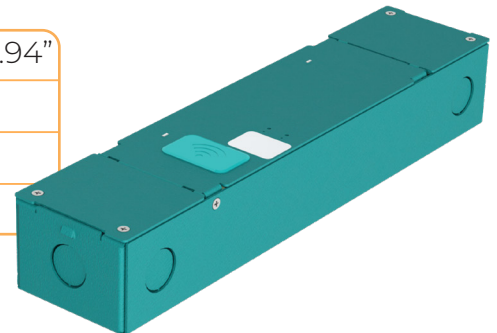
96W
192W
284W



DOWNLOAD
THE SMARTAIR APP

Enclosure Details

Dimensions	(A)9.1" x 2.80" x 1.94"	(B)11.41" x 2.80" x 1.94"
Material	Sheet Metal	
Finish	Gray Matte Powder Coat	
Environmental Rating	IP23 / IP65 (Optional)	



Features & Benefits

- RGB, RGBW, and RGB + Tunable White in One LED Driver
- Eliminating the need for Expensive and Complex DMX Installations
- Complies to IEEE and Title 24 Flicker Requirements
- Wiring Compartments With Knock-Outs for Safe and Easy Installation
- Small Linear Form-Factor
- SmartAir - App / Voice Control
- Works With AmbienTech's Cyan Wireless Wall Switches (Optional)
- Superior Dimming - Flicker Free to 0.1% before total Darkness
- UL Listed
- Current Limit Overload Protection
- Can be Loaded to Max Power with no Derating needed



Tel: 347-334-6368

Email: sales@ambientechinc.com

ELECTRICAL

SPECIFICATIONS

P/N		Class2	Class2	Class2
		DTR-A24V-C96-LG	DTR-A24V-C96x2-LG	DTR-A24V-C96x3-LG
Case	Type (See Page 3)	A	B	
Output	Max Power	96W	96W x2	96W x3
	Rated Current	4A	4A x2	4A x3
	Rated Voltage	24VDC		
Input	Input Voltage	120-277VAC +/- 10%		
	Input Frequency	50/60Hz		
Protection	Over Current	Hiccup mode, auto-recovery after short circuit removed		
	Short Circuit			
	Over Temperature	90°C Max - Auto Recovery		
Environmental	Ambient Operating Temp	-30°C - + 40°C / -86°F - + 104°F		
	IP Rating	IP65		

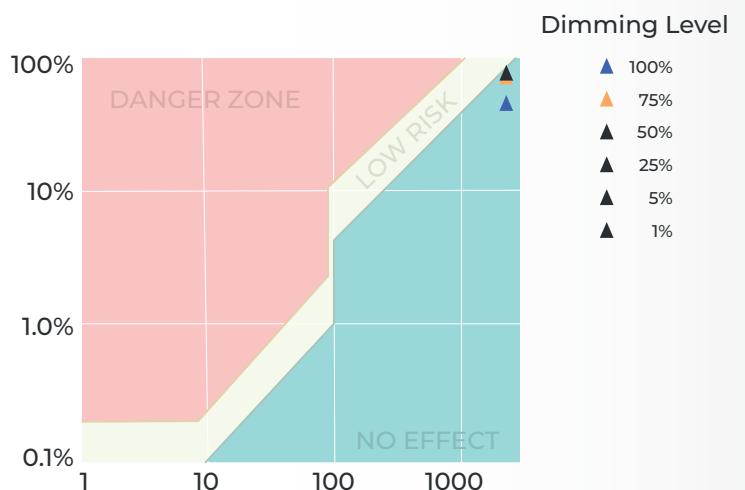
Control Performance

Control Protocol	RGB / Tunable White / Dimming
Dimming Range	0.1 - 100%
Dim-to-Off	Yes
Dimming Method	PWM (2400Hz)
Dimming Curve	Logarithmic (Default)

Flicker Performance Graph

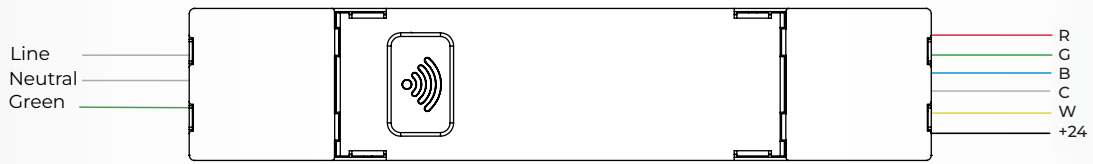
As defined in IEEE P1789, the results are presented with the low-risk in yellow and no observable effect in green.

Complies to Title 24 Flicker Requirements.

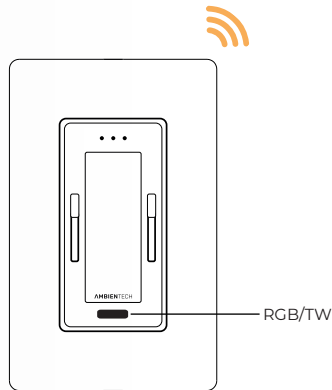


WIRING

OVERVIEW



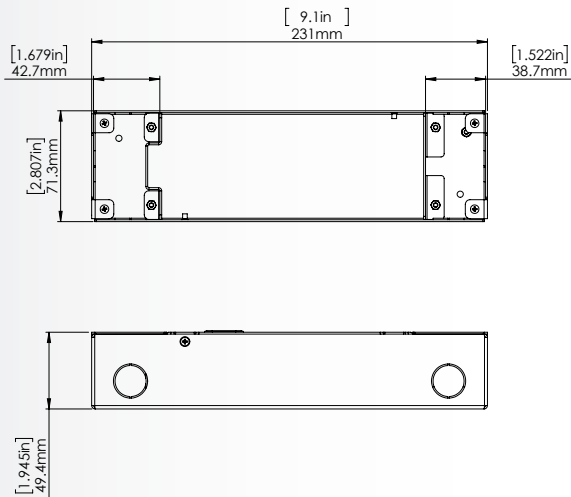
3-Way Control is available



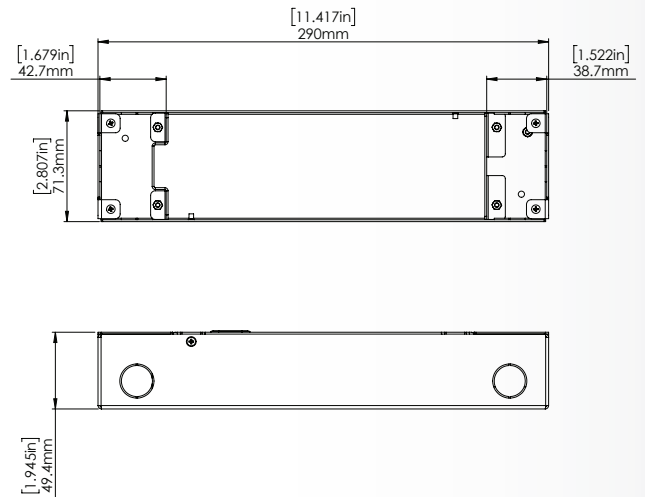
See App features page 4

Mechanical Specifications

A



B



SYSTEM

FUNCTIONALITY



Add a point of control anywhere



Multi- color control



Grouping



Scalable & Versatile



Scheduling



No hub Needed



Cloud user management



Scenes



Biorhythm

SMART HOME

INTEGRATION



Login

Zone Grouping

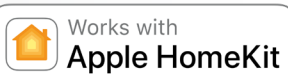
Dim-to-Warm

RGBCW

Dimming Only

BioRhythm

Scenes



Download the SmartAir App



WWW.AMBIENTECHINC.COM

Brooklyn Navy Yard
63 Flushing Avenue
Brooklyn, NY 11205

P: 347-334-6368
E: Sales@ambientechinc.com